

Transport Management System

Integrated Road Freight Management by 4S



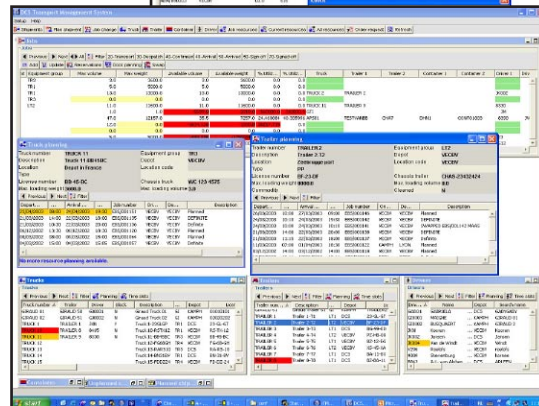
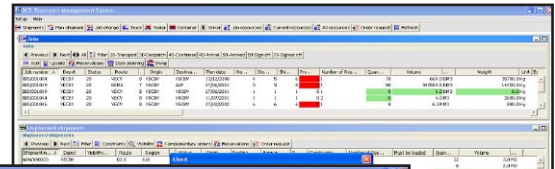
We at 4S have developed a portfolio of applications jointly known as 4Si.Logistics. Designed as a range of modules for end-to-end supply chain management, 4Si.Logistics gives you everything you need and only what you need, from a complete application suite to one individual module integrated into your existing IT system.



Our Transport Management System module (TMS) has been developed to specifically meet the information requirements for integrated road freight management.



The TMS module's flexible structure accommodates all types of road transport, from simple A to B direct deliveries to the most complex domestic or international multi-leg movements. As with all 4Si.Logistics modules, core facilities such as event management, track & trace and communications are available as standard.



Moreover, TMS functionality is further extended through integration with our Warehouse Management System module.

Below are some of the main road freight related activities optimized by the 4Si.Logistics Transport Management System module.

Order Entry

TMS order entry screens are designed for a telesales environment and characterized by user-friendly screen layouts for rapid and accurate entry of all types of transport orders.

In addition to manual order entry, the system can be fed by automatic template-generated orders, by bookings received electronically and by order data entered over the Internet. All this makes the TMS order entry system simple to use, quick in operation and tailored to your specific business requirements.

Load Planning

A key TMS facility for groupage operators is its sophisticated Graphical Load Planning.

This facility enables you to consolidate loads from different depots and optimize loading over multiple trailers using a sequence of simple drag-and-drop actions. Other user-friendly windows-based functions include right-click menus, movable and sizable columns and pop-up windows that can be maximized and minimized.

The preplanning feature even submits a proposal to the planner on how to consolidate the loads, based on flexible parameters like regions, time frames, service types and transport types. Advanced features include user-defined planning constraints like 'temperature controlled', 'hazardous goods', 'out of gauge' or 'special equipment'.

